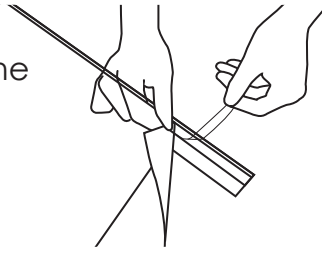


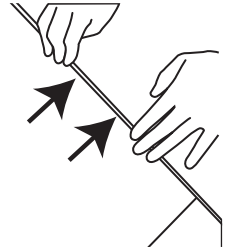
Mounting Instructions



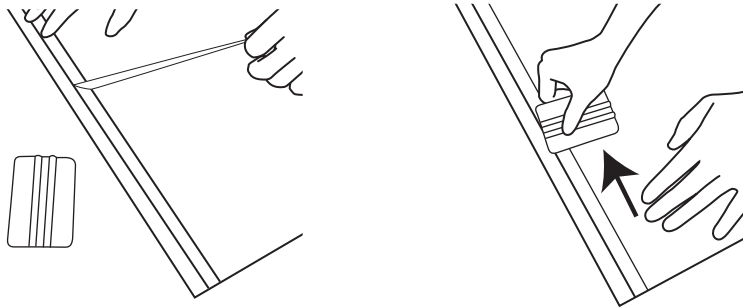
1. Mount the plastic panel strip to the rear of the graphic panel by removing the pink protective covering on the double sided tape a few inches at a time.



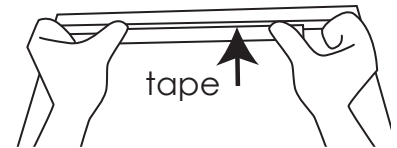
2. Press the graphic firmly against the panel strip to ensure good adhesion to the tape.



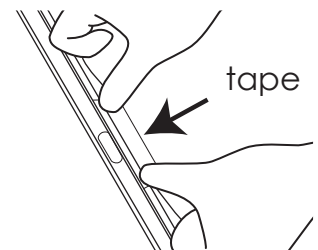
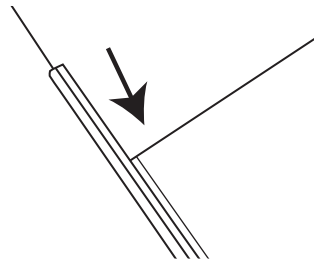
3. Repeat steps 1 and 2 with the yellow protective covering.



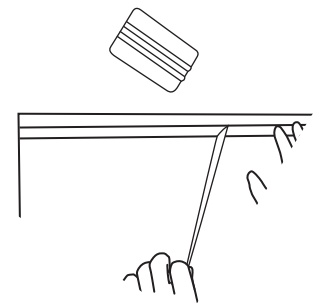
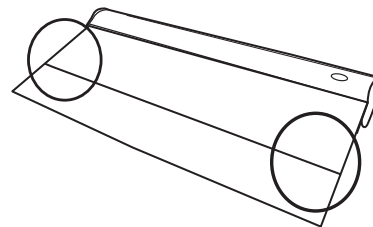
For additional protection, secure the plastic panel strip to the rear of the panel with an extra strip of tape.



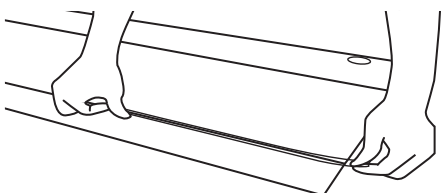
4. Slide the top plastic panel strip (top of graphic) into the metal top profile bar and secure with a piece of tape.



5. Untape the white pvc tongue from the base and remove the masking tape pieces. Line the bottom of your graphic up with the adhesive strip on the pvc tongue and mount it by slowly removing the protective tape a few inches at a time.



6. Press the graphic down firmly and reinforce with an extra piece of tape.



7. Pull the graphic out slightly and remove the locking pin. Slowly let the graphic retract into the base.

